

Elev  
109

OCH: Cat A, B 501, Cat C 591

**RICHARDS BAY**  
(Cat A,B,C) **BREAKCLOUD VOR/DME 23**

**RICHARDS BAY Tower / Approach**  
118.9

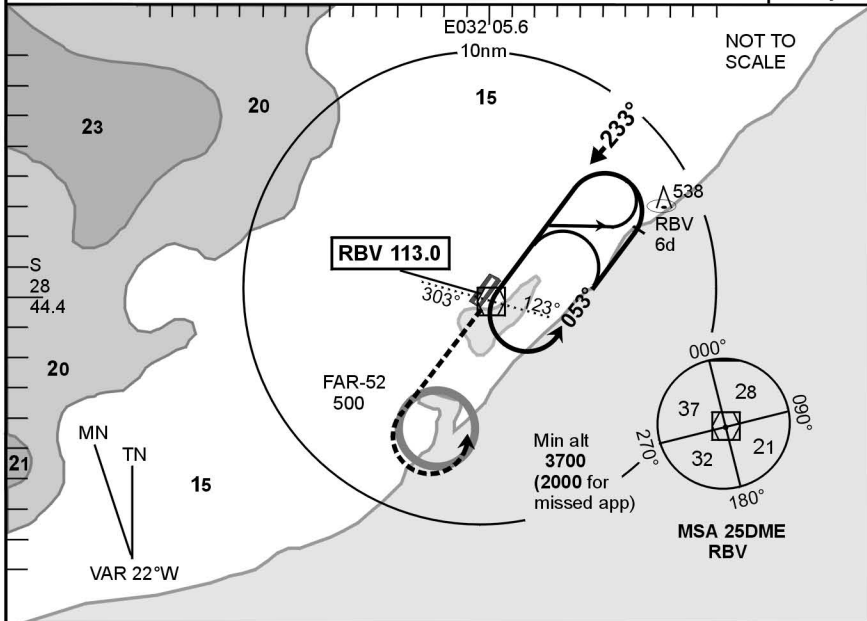


VOR-03

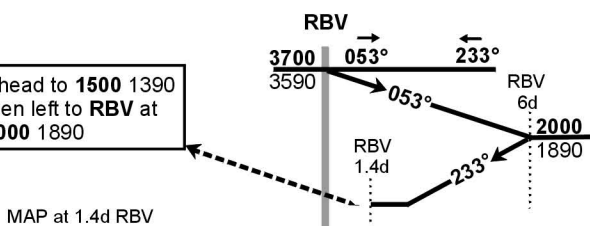
EFF  
08 July 04

FARB

© AVDIRECT / 280104

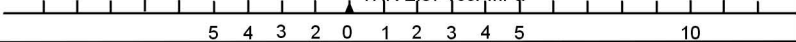


Ahead to **1500** 1390  
then left to **RBV** at  
**2000** 1890



MAP at 1.4d RBV

THR Elev 109/4hPa



T. Lev		ATC
T. Alt		3500
kt	fpm	6d
200	1080	—
180	970	THR
160	860	2:08
140	750	2:27
120	650	2:51
100	540	3:25
80	430	4:17

1. Initial approach altitude **3700** or higher MSA.
2. Descend in the hold to **3700**.
3. Procedure turn approach applicable only within 30° of the outbound heading. Use phraseology 'Request procedure turn approach'.
4. All circling to land maneuvers must be conducted at the pilot's discretion east of extended runway centerline due to factory complex west of aerodrome.
5. RoD computes at 3.05° angle of descent.

Advisory Alt/Hgts		
RBV VOR/DME		
6d	2000	1890
5d	1680	1570
4d	1350	1240
3d	1030	920
2d	710	600

CAA South Africa

Rev: Topo clearance heights reviewed. Chart #.

WGS-84